

Upgrading an in-situ Version 4.0 database to version 6.0

1. Download the script from one of the links below.

Database named [**Lucid**] for *Lucid CoPS*, *Lucid Rapid*, *LASS 8-11* and *LASS 11-15*

www.lucid-research.com/download/tools/scripts/Lucid_V4_to_V6_Database_Upgrade.zip

Database named [**LADS**] for *LADS* and *LADS Plus*

http://www.lucid-research.com/download/tools/scripts/LADS_V4_to_V6_Database_Upgrade.zip

2. Extract the .sql file from the .zip you downloaded.

3. In *SQL Server Management Studio* choose **File > Open > File** and select this file.

4. When you see the script in the main window, select **Execute** to run it.

Migrating an existing Lucid Product Version 4.0 or 6.0 series database from one server to another.

Before you start, please READ THIS:

1. This document gives the example of migrating across the database named [Lucid], which serves the software titles: *LASS 8-11*, *LASS 11-15*, *Lucid Rapid* and *Lucid CoPS*.

To migrate databases used by other Lucid software titles please see [Appendix 1](#) at the end of this document for the filenames you need to look for.

2. Requirements: The source database must be from a MS SQL version equal to or earlier than your destination version. Example: You can move an SQL 2005 database to another SQL 2005 server or to an SQL 2008 server, but not SQL 2008 to SQL 2005.

3. Don't go to all this trouble if there's an easier way to migrate your data! Please read [Appendix 2](#) – migrating data with the later Lucid versions.

4. To learn about the differences between the database versions used by Lucid since the 2003 and to find out about how to upgrade the obsolete MSDE databases originally used by Lucid CoPS, Lucid Rapid, LASS Junior, LASS Secondary and LADS, there is a useful *Fact Sheet 46* available at this download link.

<http://www.lucid-research.com/documents/factsheets/Fact%20Sheet%2046%20v01%20-Network%20Database%20Migration%20and%20Upgrade%20Instructions.pdf>

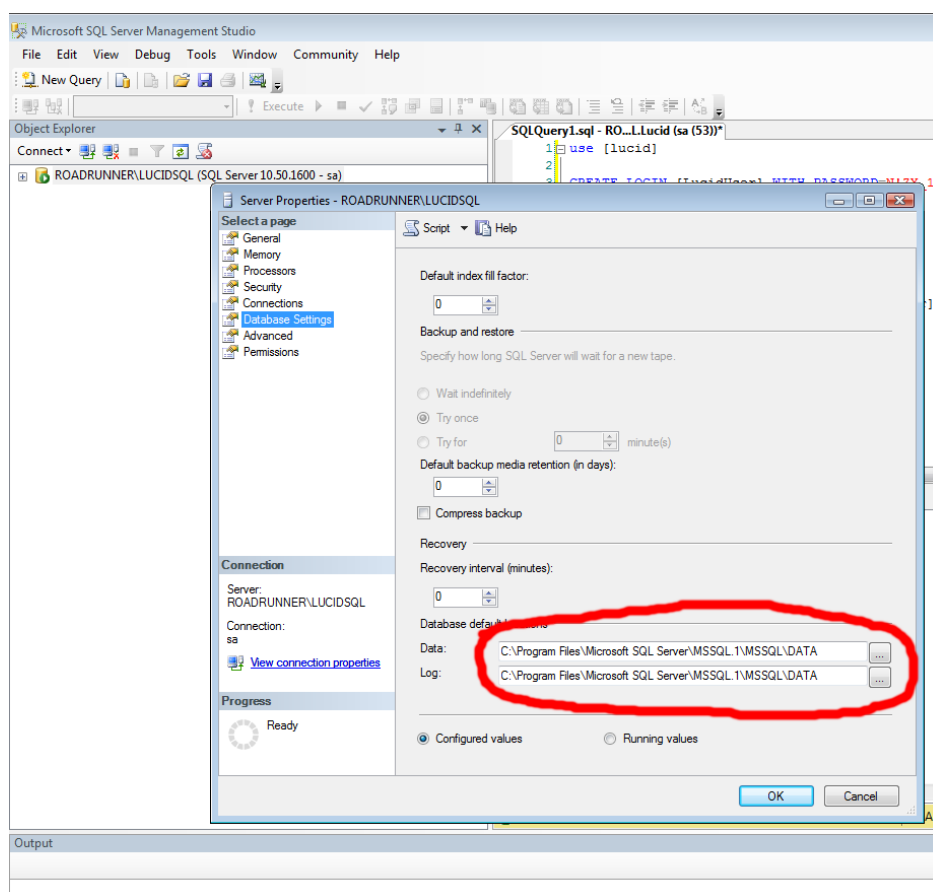
Fact Sheet 46 is also be found on Version 6.0 product CDs in the folder 'Migration'.

STEP BY STEP MIGRATION GUIDE

1. Ensure you have your SQL Server instance installed on your destination server and with *SQL Server Management Studio* available on the same machine to administer the database you are going to migrate.
2. Find the source Lucid database files (there always two of them) by searching on the first server for the files **Lucid.mdf** and **Lucid_log.ldf**.

In this example we will put a copy of these files into their native folder which will normally start with `C:\Program Files\Microsoft SQL Server\`
 Figure 1 shows how to locate the server folder where databases normally live: Right mouse click on the root of the Object Explorer, choosing *Properties* and then *Database Settings*.

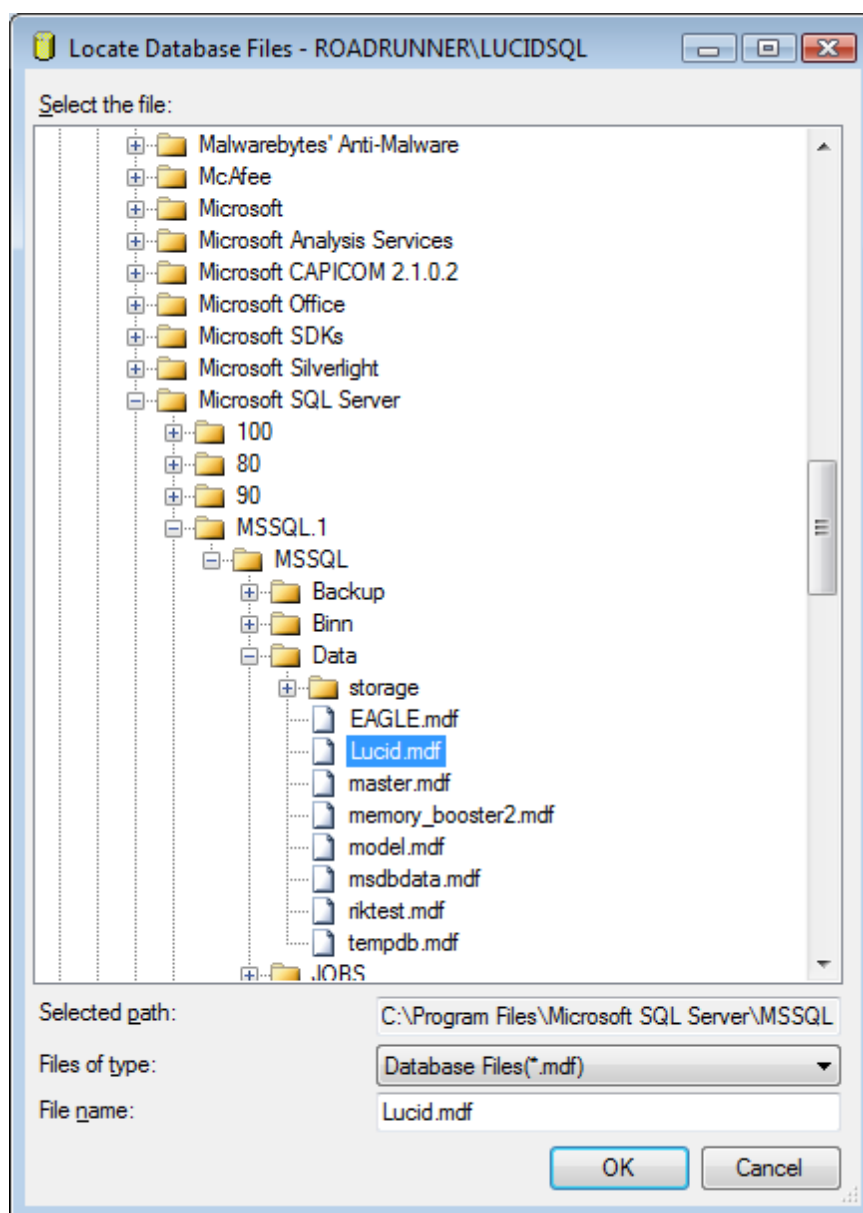
Figure 1 – how to locate the folder where SQL databases reside



Please go ahead and manually copy the two database files from the source computer to the destination folder on the second computer (see example ringed in red in figure 1).

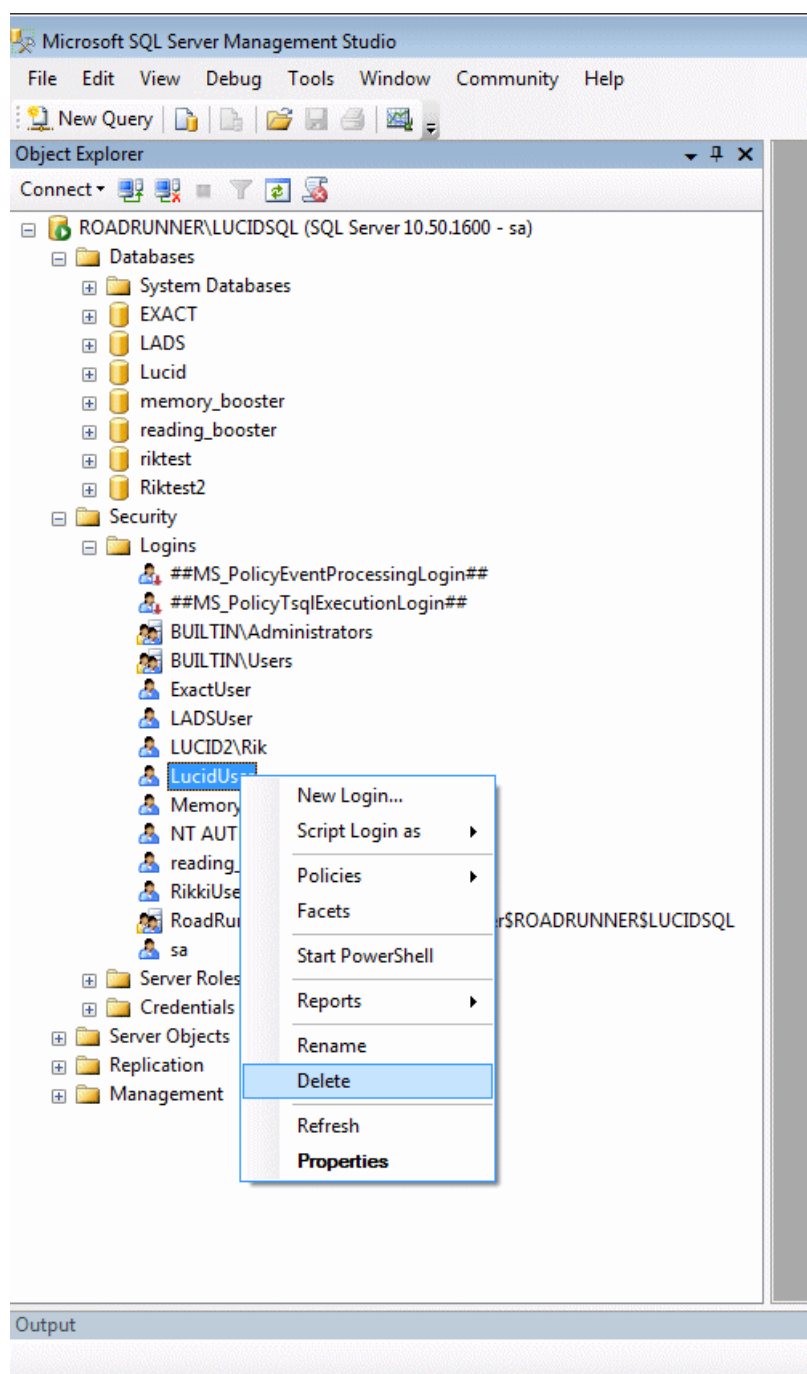
3. Now we need to attach the new database. Run Management Studio and right mouse click over the **Databases** node. Select *Attach*. Select Add and choose the Lucid.mdf entry. See Figure 2 below. Select *OK*.

Figure 2 – choosing the database to Attach



4. The next task is to reconstruct the Account, Login and Permissions for the database as SQL Server does not simply accept any database dropped into its folder. Then delete the Login manually, see Figure 3 below:

Figure 3 – manually deleting the *LucidUser* Login using SQL Server Management Studio



4. Now we recreate the Account and Login using the script below. Choose *New Query* in SQL Management Studio, enter the script shown below and then *Execute* it: (This script is downloadable too – see [Appendix 1](#))

```
USE [LUCID]
```

```
CREATE LOGIN [LucidUser] WITH PASSWORD=N'ZX_123_abz',
DEFAULT_DATABASE=[Lucid], DEFAULT_LANGUAGE=[British],
CHECK_EXPIRATION=OFF, CHECK_POLICY=ON
GO
```

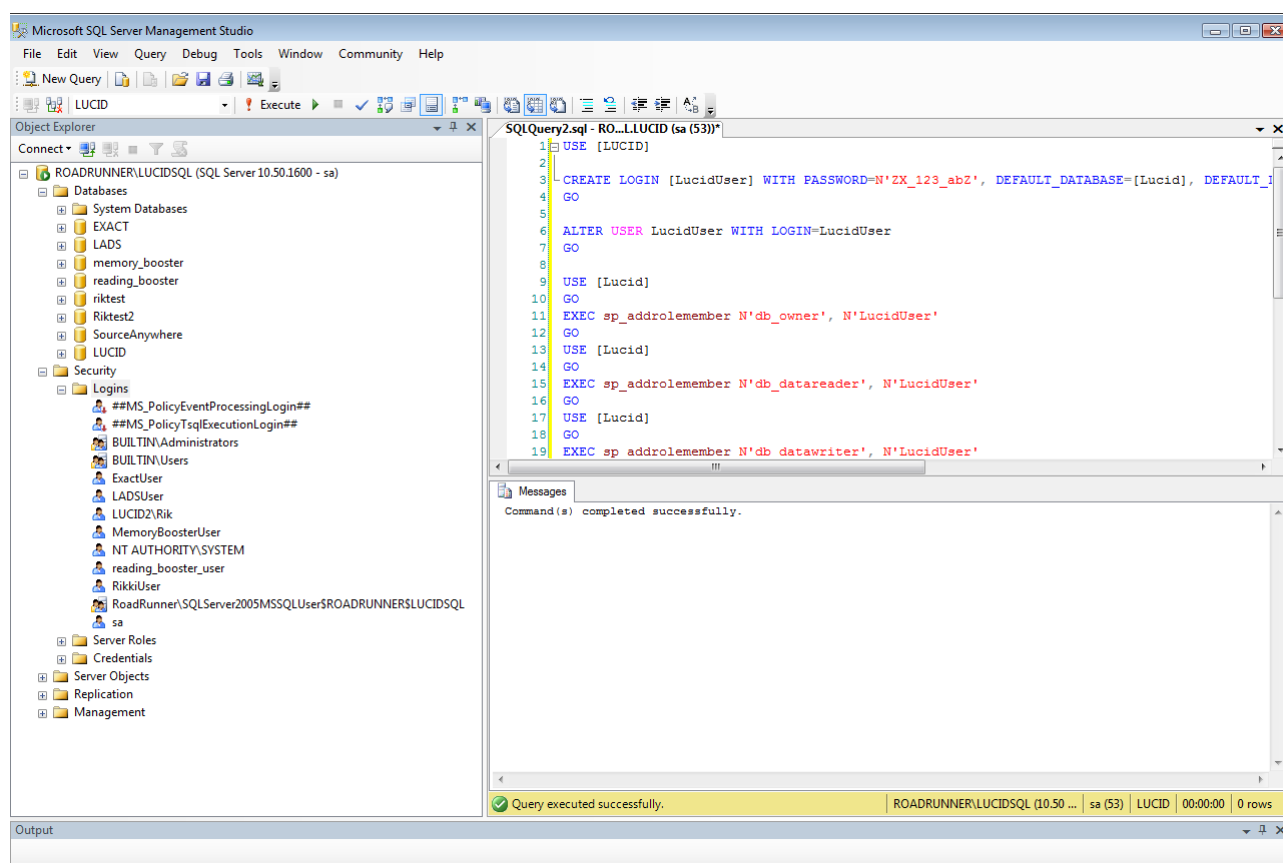
```
ALTER USER LucidUser WITH LOGIN=LucidUser
GO
```

```
EXEC sp_addrolemember N'db_owner', N'LucidUser'
GO
```

```
EXEC sp_addrolemember N'db_datareader', N'LucidUser'
GO
```

```
EXEC sp_addrolemember N'db_datawriter', N'LucidUser'
GO
```

Figure 4 – running your script in a New Query.



5. Assuming you had no errors, the database should be ready to use.

6. Now run the utility called **“Database installer Tool Deluxe.exe”** which will be found in the Lucid application folder (e.g. \Lucid Exact Network\ or \LASS 11-15 Network\). This will create the connection string which allows the Lucid application to connect to its database.

Figure 5 – database installer tool which builds a connection string



You should now have the encrypted connection string file “**server_config_2.dat**”, which lives in the folder called \Data just off the Lucid application folder (e.g. \Lucid Exact Network\ or \LASS 11-15 Network\). Please note that this file cannot be decrypted and read without help from Lucid Research’s technical support team. If you delete this file, then when you run the database installer tool deluxe again it will allow you to recreate it from scratch.

APPENDIX 1

Names of database files used with different Lucid Products

Title	Filenames
LASS (all titles), Lucid Rapid, Lucid CoPS	Lucid.mdf & Lucid_log.ldf
LADS and LADS Plus	LADS.mdf & LADS_log.ldf
Lucid Exact	EXACT.mdf & EXACT_log.ldf
Comprehension Booster (formerly Reading Booster)	reading_booster.mdf & reading_booster_log.ldf
Memory Booster	memory_booster.mdf & memory_booster_log.ldf

There are five SQL scripts which are designed to rebuild the Login for a Lucid product database after you have physically migrated the database and deleted its current Login. These scripts have been combined into one text file with the .sql extension which also contains instructions. To get this file please go to the link below:

www.lucid-research.com/download/tools/scripts/Login_creation_scripts_migration.zip

APPENDIX 2

Migrating data with the later Lucid versions

The following Lucid product versions support data export and import using archives containing pure SQL queries. If you have already exported an archive of your old database and you can run the Lucid software connected to its new SQL server, it will be possible to import your archive into the new database. This means that the manual migration steps described in the main part of this document will not be required. You can therefore use 'Archiving' or 'System Housekeeping' options found in menu of the Administration module of your Lucid software.

These product versions will export and import SQL type archive files:

Title	Versions
LASS 8-11	Version 6.0 onwards
LASS 11-15	Version 6.0 onwards
Lucid CopS	Version 6.0 onwards
Lucid Rapid	Version 6.0 onwards
LADS	Version 6.0 onwards
LADS Plus	Version 6.0 onwards
Lucid Exact	Version 1.0-N and later
Comprehension Booster (formerly called Reading Booster)	Version 1.0-N and later
Memory Booster	Version 1.0-N and later

Author: Rik Leedale, Lucid Research Limited

Date: 20/09/2011